

"Dawn"

With Expression (♩ = 60)

Measures 1-8: Treble clef, key of D major (two sharps), 4/4 time. Measure 1 has a whole rest with a '5' above it. Measures 2-8 feature a melodic line with eighth notes and triplets, starting with a 'sub. p' dynamic and ending with a 'mf' dynamic. A large slur covers measures 2-8.

Measures 9-13: Treble clef, key of D major, 4/4 time. Measure 9 has a whole rest. Measures 10-13 continue the melodic line with eighth notes and triplets, starting with a 'sub. p' dynamic and ending with a 'mf' dynamic. A large slur covers measures 10-13.

"Doubts"

Measures 14-25: Treble clef, key of D major, 4/4 time. The section consists of continuous eighth-note patterns. Measure 14 starts with a 'p' dynamic. Measures 14-16 have a crescendo hairpin. Measures 17-19 have a decrescendo hairpin. Measures 20-22 have a crescendo hairpin. Measures 23-25 have a decrescendo hairpin and end with a 'mf' dynamic. Slurs are placed over groups of eighth notes.

"Serenity"

With Suavity

Measures 26-38: Treble clef, key of D major, 4/4 time. The section features a melodic line with eighth notes and quarter notes. Measure 26 starts with a 'p' dynamic. Measures 26-30 have a crescendo hairpin. Measures 31-35 have a decrescendo hairpin. Measures 36-38 have a 'rit.' (ritardando) marking and end with a 'mf' dynamic. Slurs are placed over groups of eighth notes.

"Mysterious"

With Thriller (♩ = 105)

44 8 rit.

mf 3 3 3 3

57

63

69 accel. poco a poco

With Spirit (♩ = 125)

75 With Spirit (♩ = 125)

f

79

83

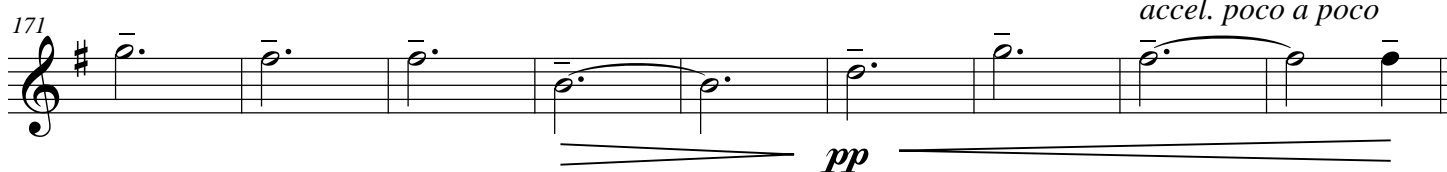
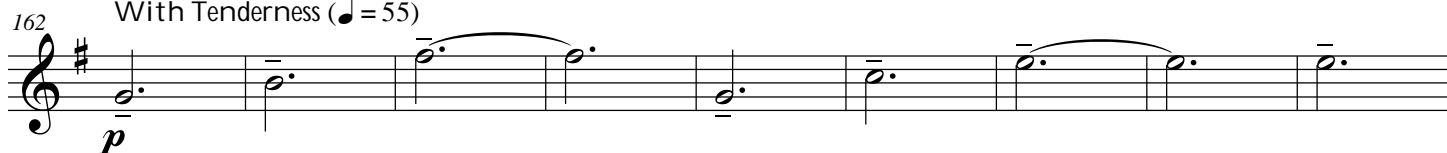
87

91

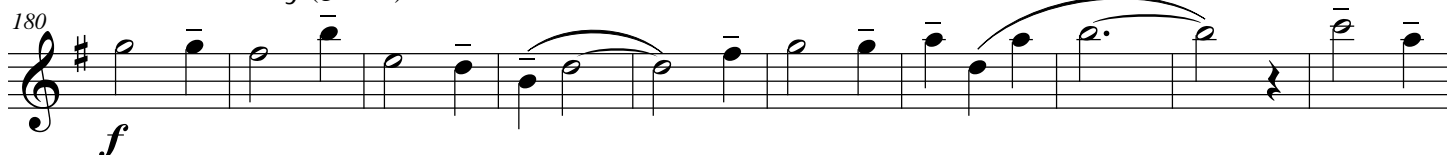


"Forgiveness"

With Tenderness (♩ = 55)



With Delicacy (♩ = 62)

**"Jolt"**

With Bravery ♩ = 165 (2+2+3)

